

MEL NEWS


maamba
MAY - AUG 2025
Issue 45



POWERING PROGRESS AT THE AGRICULTURAL & COMMERCIAL SHOW

Page 04

INSIDE

ZESCO AND MAAMBA ENERGY STRENGTHEN STRATEGIC TIES

Page 06

PRESIDENTIAL ADVISER VISITS MAAMBA ENERGY TO ASSESS PHASE II POWER PROJECT

Page 07

MAAMBA ENERGY'S TRANSFORMATIVE FLY ASH BRICK PLANT UP AND RUNNING

Page 12



MR. ASHWIN DEVINENI

Resident Director

FOREWORD

Dear Readers,

As we come to the end of the second quarter of 2025, Maamba Energy Limited (MEL) is making commendable progress on its Phase II thermal power expansion, underscoring our commitment to strengthening Zambia's energy infrastructure and national energy security through collaboration with ZESCO. MEL's participation at the 97th Agricultural and Commercial Show in Lusaka highlighted our contributions to Zambia's reliable electricity supply and long-term energy sustainability, aligning with the theme "Adapting to Climate Change".

In August and September 2025, MEL's thermal power plant will undergo crucial maintenance shutdowns for Units 1 and 2, vital for ensuring operational excellence, efficiency, reliability, and safety of our power generation. We are working closely with government authorities and stakeholders to complete these activities within stipulated timelines, aiming to promptly restore full operational status of both units to help mitigate Zambia's power deficit and reinforce MEL's role in the country's energy stability.

Aligned with our sustainability and community empowerment ethos, MEL successfully handed over the fly-ash brick plant to the local community, transforming an industrial by-product into an entrepreneurial opportunity, reflecting our belief in shared prosperity. Our vision is for MEL to be Zambia's leading energy and mining enterprise, catalysing sustainable national development and enhancing community livelihoods.

Looking ahead, we uphold safety, discipline, and innovation as core principles driving our success and long-term objectives. I appreciate the Government of Zambia's focus on critical infrastructure like the Batoka-Maamba Road rehabilitation, enhancing connectivity and regional economic activity.

To the Maamba Energy family, I express heartfelt gratitude for your dedication, professionalism, and resilience. Together, we are powering Zambia's future responsibly, sustainably, and with pride.

*Ndalumba kapati, Natotela saana,
Dzikomo kwambiri*



**LT COL CYRUS MINWALLA
(RETD)**

CEO

MESSAGE FROM CEO

Dear Colleagues,

As the curtain falls on the second quarter of 2025, I take immense pride in Maamba Energy Limited's (MEL) continued commitment to safety, operational excellence and community development - the cornerstones of our success as Zambia's leading integrated energy company.

Our 300 MW Phase II expansion project continues to advance steadily, marking a pivotal step toward reinforcing Zambia's national energy security. With commissioning set for 2026, we are on track to deliver a combined 600 MW output, a milestone that reflects the dedication, precision, and collaboration of every MEL team member.

In this quarter, we strengthened our safety culture through a specialised Legal Appointment Training session conducted by the Mine Safety Department (MSD). This initiative, targeting both senior management and frontline supervisors, deepens our culture of compliance, competence, and accountability. Equally, our mining division has meticulously aligned coal supply operations to meet the growing energy demands of Phase II, ensuring smooth and reliable power generation ahead.

Safety remains our top priority. The successful construction and commissioning of brake test

ramps at Kanzinze and Izuma pits demonstrate our proactive approach to risk management. These new facilities, designed for both heavy and light vehicles, reinforce our commitment to protecting people, equipment, and the environment setting a higher bar for mining safety standards in Zambia.

Beyond operations, our Corporate Social Responsibility (CSR) initiatives under the banner "Making a Difference" continue to transform lives across Sinazongwe and Zimba Districts.

Our investments in community developmental projects embody MEL's ethos of responsible growth, empowerment, and excellence. We do more than generate electricity; we energize communities, inspire development, and set the standard for sustainable mining and energy leadership in Zambia.

As we move into the second half of 2025, I call upon every member of the MEL family to maintain our shared focus on safety, innovation, and teamwork. Your professionalism, dedication, and passion are the true driving forces behind our success.

Together, let us continue to Power Zambia's Future responsibly, sustainably and proudly.



POWERING PROGRESS AT THE AGRICULTURAL & COMMERCIAL SHOW

Energy security and climate resilience take centre stage at Zambia's premier exhibition

The 97th Agricultural and Commercial Show in Lusaka, held in August under the theme "Adapting to Climate Change," brought together leaders in agriculture, energy, and industry to showcase innovations that are shaping Zambia's future. Among the highlights was Maamba Energy Limited (MEL) at the ZCCM-IH stand, which drew significant public interest for its focus on energy generation, sustainability, and the country's transition towards a climate-resilient economy.

As part of ZCCM-IH pavilion, MEL attracted a steady stream of visitors eager to learn more about how the company's operations in coal mining and thermal power generation contribute to Zambia's energy security. For many, the exhibition offered a first-hand opportunity to understand how MEL is ensuring reliable electricity supply while investing in sustainable technologies.

"Our presence at the Agricultural and Commercial Show demonstrates our commitment not only to powering Zambia but also to engaging the public in



conversations about sustainability," said Jethro Sikalunda, who led the MEL team at the stand. "Visitors were especially keen to learn about our emissions capture and treatment technologies, which show how coal-based power can adapt responsibly to environmental concerns. It was also encouraging to see young people asking how MEL is

diversifying into renewables as part of Zambia's long-term climate adaptation strategy."

The company's exhibition drew the attention of key stakeholders, including the Vice President - Finance and Administration of the Engineering Institution of Zambia (EIZ), Chansa

Musonda, and the EIZ Southern Region Vice Chairperson, Brian Muwanei, who commended MEL's efforts in innovation and environmental management. A special highlight was the visit by MEL's Chief Executive Officer, Col. Cyrus Minwalla (Retd).

For MEL, the show was an important platform to demonstrate its role as a dependable power producer, particularly at a time when climate-related challenges such as droughts have affected hydropower generation. With its 300MW coal-fired thermal power plant, MEL provides the country with a stable baseload supply, ensuring electricity for industries, agriculture, and households alike.

"Adapting to climate change is not just about securing today, it is about safeguarding the future," Mr. Sikalunda added. "At Maamba Energy, we are proud to be part of that journey, ensuring energy security while exploring new ways to integrate renewable solutions for generations to come."



ZESCO AND MAAMBA ENERGY STRENGTHEN STRATEGIC TIES

Stakeholder alignment takes centre stage in Zambia's energy sector



In a show of proactive collaboration, ZESCO's Corporate Affairs Manager, Rose Sibisi, led a joint visit with media representatives to Maamba Energy, reinforcing the importance of stakeholder engagement in Zambia's power landscape.

The visit, which coincided with preparations for an upcoming maintenance window, focused on deepening institutional alignment and fostering transparent communication between the two energy players. A full tour of Maamba's facility provided ZESCO with insight into operational priorities and technical planning, laying the groundwork for more synchronised decision-making.



Mrs Sibisi highlighted the value of ongoing dialogue, noting that strategic partnerships are essential to maintaining grid stability and public confidence. "When we engage early and often, we build resilience not just in infrastructure, but in relationships," she said.

As Zambia navigates increasing energy demands and seasonal pressures, such engagements signal a maturing sector, one where coordination and shared foresight are key to powering the nation forward.

PRESIDENTIAL ADVISER VISITS MAAMBA ENERGY TO ASSESS PHASE II POWER PROJECT



The Presidential Adviser, Mr. Jito Kayumba, recently visited Maamba Energy to inspect the ongoing construction of the Phase II expansion of the thermal power plant. The project, which will add an additional 300 MW to Zambia's energy capacity, is scheduled for completion next year.

During the visit, Mr. Kayumba toured the construction site and met with the Senior Management team at the thermal power plant. He commended the progress being made and highlighted the significant impact the Phase II project is expected to have on the country's energy sector, reinforcing Zambia's drive towards enhanced power generation and energy security.





STRATEGIC COAL SUPPLY FUELLING PHASE II OF THE THERMAL POWER PLANT EXPANSION

As the region's energy demands continue to rise, the expansion of the Maamba Energy Power Thermal Power Plant (TPP) into Phase II stands as a defining step toward strengthening national energy security. But behind the turbines, transformers, and control rooms lies another powerhouse, the mining team whose strategic planning and innovation are ensuring that the plant's lifeblood, coal, is ready to fuel the next phase of growth.

Laying the Groundwork

The journey toward Phase II began with a deep dive into geological and operational data from the Izuma and Kanzinze pits, the primary sources of coal for the TPP. The objective was clear, to ensure that the existing reserves can reliably meet the needs of both current (Phase I) and future (Phase II) operations.

By analysing historical production records, coal quality trends, and

geological mapping, the team established a solid foundation for decision-making and transforming data into actionable insights that would guide mine planning and production strategies.

Smarter Modelling for Smarter Mining

Accurate geological information is the heartbeat of sustainable mining. To strengthen this foundation, the team commissioned advanced geological models for both the Izuma and Kanzinze pits.

At Kanzinze, collaboration with Datamine consultants produced a new, data-rich model that gives a clearer picture of coal seam structures, quality variations, and resource potential. Meanwhile, the Izuma model was realigned to match current pit boundaries and operational realities, eliminating inconsistencies and improving accuracy.

Together, these updated models ensure that mining activities from extraction to blending are based on the most precise and up-to-date data available.





Balancing Today and Tomorrow

With a stronger understanding of the geology, the next task was to craft mine plans that serve both the present and the future.

The newly devised mine schedules were strategically crafted to ensure a tripartite alignment of objectives: firstly, to maintain a steady and uninterrupted coal supply stream in support of ongoing Phase I operations; secondly, to proactively prepare for the escalated production exigencies anticipated upon the commencement of Phase II; and thirdly, to embed sufficient flexibility within the scheduling rubric to adeptly accommodate and respond to potential variances in commissioning timelines, thereby optimising operational responsiveness and resilience.

By fine-tuning equipment deployment, sequencing mining faces, and optimizing coal blending, the team created a plan that synchronizes seamlessly with the plant’s operational rhythm.

Stockpiling for Security and Stability

A cornerstone of the Phase II preparation is the introduction of a three-month

stockpiling strategy, a proactive move that guarantees uninterrupted coal supply, even in the face of challenges such as heavy rains, equipment downtime, or pit access limitations.

This strategic buffer not only safeguards the continuity of daily operational activities but also affords the mining team the requisite latitude to concentrate on longer-term strategic initiatives, such as waste stripping and pit development, without jeopardising or compromising the immediacy of coal supply obligations. It constitutes a pragmatic exemplification of the resilience and foresight ethos that quintessentially characterise and underpin the Thermal Power Plant’s (TPP) overarching operational philosophy.

Dual-Pit Production

Upon the operationalisation of Phase II, coal supply will be facilitated via an integrated production model synergistically harnessing resources from both the Izuma and Kanzinze pits, thereby yielding three substantive benefits: it augments production capacity to congruently address

escalating energy demand trajectories, ensures consistent coal quality parameters through the implementation of strategic blending protocols, and mitigates supply chain risk exposure by effecting a diversification of sourcing provenance between the dual pits.

This bipartite pit strategy efficaciously underpins reliability and flexibility, constituting the dual foundational pillars upon which the edifice of sustainable energy generation is robustly predicated.

A Vision Beyond Expansion

The groundwork being laid today goes beyond expanding capacity; it represents a forward-looking vision for energy resilience. Through innovation, precision, and teamwork, the mining division is ensuring that when Phase II comes online, it will do so on a foundation as strong and dependable as the energy it will produce.

The Thermal Power Plant’s expansion is more than an engineering project, it’s a story of collaboration, strategy, and commitment to powering the nation’s growth sustainably and securely.

MEL VOCATIONAL TRAINING CENTRE EXPANDS AND **UPGRADES TO MEET INDUSTRY DEMANDS**

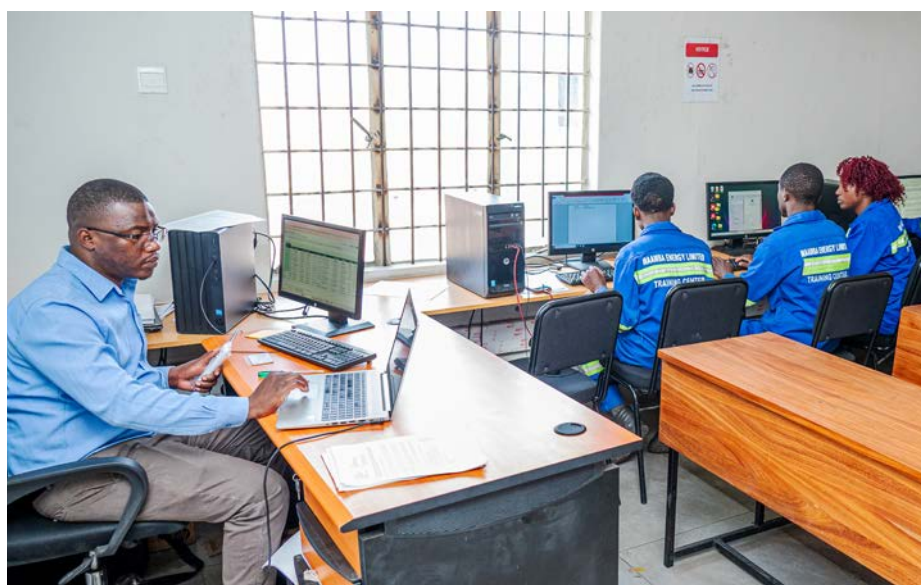


Since its revitalisation in 2015, the Maamba Energy Limited Vocational Training Centre (VTC) has stood as a beacon of opportunity, empowering young people from surrounding communities with the practical skills needed to build meaningful careers. What began as a modest initiative with two core programmes Metal Fabrication and

Welding and Electrical Technology, has grown into a thriving hub of technical excellence.

Now, in a bold stride toward the future, the Centre is expanding and upgrading its training facilities and programmes to better align with evolving industry needs and global skill standards.

Recognising the growing complexity of modern industries, MEL VTC has upgraded its Metal Fabrication and Welding and Electrical Technology courses to Trade Test Level 1, extending the training duration to one (1) year. This shift not only deepens students' technical competencies but also enhances their employability in Zambia's competitive job market.



In 2024, the Centre introduced the Mechanical Fitting course at Trade Test Level 1, responding to the increasing demand for skilled mechanical technicians in the industrial and energy sectors. The second batch of trainees is already underway, reflecting strong community interest and industry confidence.

Infrastructure Upgrades for a Modern Learning Experience

To complement the academic upgrades, MEL VTC is undertaking major facility enhancements. The Centre is setting up a new computer laboratory, expanding classrooms, and upgrading storage and workshop areas. These improvements



are designed to create an environment that mirrors real-world industrial settings, preparing students for the challenges and opportunities of modern workplaces.

In addition, advanced equipment is being introduced to strengthen hands-on training and keep pace with industry technologies.

Building Well-Rounded Professionals

MEL’s approach to vocational training goes beyond technical expertise. Students are equipped with soft skills, computer literacy, and entrepreneurship training, ensuring they can not only secure employment but also create opportunities through self-employment.

The Centre also provides on-the-job training during power plant shutdowns, giving learners invaluable exposure to live industrial operations. This hands-on experience continues to be one of the defining strengths of the MEL training model.

Over the years, MEL VTC has successfully trained 16 batches of students, many of whom have gone on to work with leading companies such as First Quantum Minerals (FQM), Trade Kings, Fit One

Zone, and subcontractors like Suncrest, Smech, Addmore, and Dufftuff.

In a remarkable recent milestone, 16 graduates from the Metal Fabrication program were hired for the MEL Power Plant Phase II project under M/S Run, demonstrating the Centre’s strong link between training and real industry needs.

Through its upgraded programs and expanded infrastructure, the MEL Vocational Training Centre reaffirms its commitment to transforming lives through skills development. By investing in modern facilities and forward-looking training, MEL continues to prepare the next generation of skilled professionals that are empowered, employable, and ready to drive Zambia’s industrial growth.





MAAMBA ENERGY'S TRANSFORMATIVE FLY ASH BRICK PLANT UP AND RUNNING

Fly Ash Brick Plant turning waste into opportunity

Maamba Energy Limited (MEL) has launched Zambia's first Fly Ash Brick Plant, a pioneering initiative that transforms coal combustion by-products into durable, cement-free bricks. This project not only reduces environmental impact but also empowers the local community.

From Waste to Wealth

The plant repurposes fly ash and bed ash into high-quality bricks without

using cement. "The philosophy is simple—create value from by-products and invest in our community," says MEL's Head of CSR, Christopher Mukala. Inspired by successful Asian models, the initiative reflects MEL's commitment to sustainable development.

Owned by MEL and operated by the Maamba Multi-Purpose Brick Making Cooperative, the plant ensures economic benefits stay local. Thirty members—prioritising vulnerable

women and people with disabilities—have received training in cooperative management, entrepreneurship, and technical operations.

Sustainable and Strong

The bricks offer a low-carbon alternative to traditional burnt bricks, which contribute to deforestation and soil erosion. "They're highly compressed and resistant to cracking, even with mining-related vibrations," notes Cooperative Board Member Mrs Mubambekwa Kalaluka Banji.

Powered by the NEPTUNE 1000+ automated machine, the plant produces up to 10,000 bricks daily, repurposing 800 metric tonnes of ash monthly. MEL supplies the ash free of charge.

Market Confidence and Expansion

MEL is both benefactor and primary customer, purchasing bricks for its own projects, including a new Lusaka office. "The mine gave us the factory and the business—they're also our customers," says Mrs Banji.





Local contractors are embracing the bricks' durability and cost-effectiveness. Emmanuel Chileshe a resident building five houses in Maamba, says, "They're strong, locally made, and reduce transport and cement costs."

Cooperative Chairman Charles Masheke highlights the initiative's impact: "We're 30 members—12 women and 18 men—and employ 30 others. We began full production in March. Initially, uptake was slow, but interest is growing. One customer has bought 18,000 blocks."

Demand is rising beyond Maamba, with enquiries from Sinazongwe and plans to supply Constituency Development Fund (CDF) projects. "We now produce over 1,000 blocks daily—around 30,000 monthly. As demand grows, we aim to expand to two shifts," Masheke adds.





MAAMBA GOLF CLUB UNDERGOES MAJOR REVAMP TO BOOST FACILITIES AND MEMBERSHIP EXPERIENCE



BRIGHTON MWIINGA
Human Resources Superintendent

The Maamba Golf Club is undergoing a major facelift, with extensive rehabilitation and improvements already underway and more set to follow in the coming months.

Speaking on the upgrades, Human Resources Superintendent Brighton Mwiinga, who is overseeing the project, said the works are aimed at modernising the facility, making it more attractive to golfers, members, and the wider community.

“In the past few months, we engaged a consultant from South Africa to help us rehabilitate the golf course. The first phase focused on improving drainage and installing a new automated irrigation system, complete with purpose-built pumps and a reservoir pond to ensure a reliable water supply,” Brighton explained.

Key works completed so far include the rehabilitation of the greens and tee boxes, landscaping of the fairways to achieve a more natural and even terrain, and the introduction of a professional greenkeeper to maintain standards. Fertilisation programmes and daily mowing schedules are also being implemented to keep the greens fast and in pristine condition.

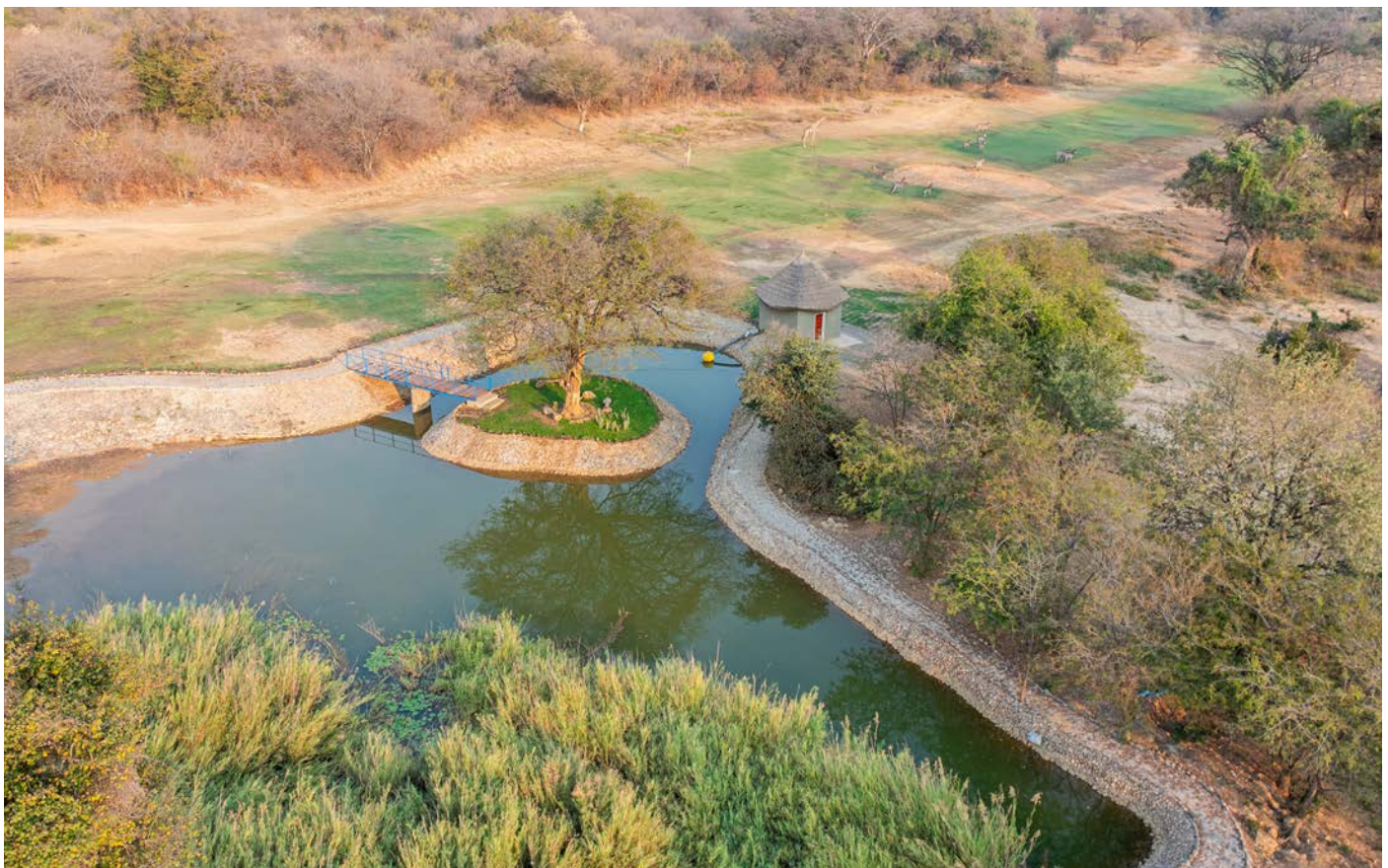
“In addition to the course itself, we’ve also restructured management of the Golf Club, moving it under Human Resources to ensure proper oversight and resource allocation. We’ve invested in new equipment and brought in additional staff about 8 new employees to support maintenance and operations. This is creating permanent job opportunities for locals,” he added. Beyond the course, the clubhouse is

also receiving a facelift. The restaurant and kitchen are being refurbished with new furniture, air conditioning, kitchen equipment, and an updated menu. Pool tables and entertainment facilities are also being introduced to enhance the club's social appeal.

Phase Two of the project will focus on structural changes, including upgrading the gym with modern equipment, establishing a fully functional pro shop for golf merchandise, and creating a new putting green in front of the clubhouse. Plans also include installing yardage markers on the fairways to improve the playing experience.

"We expect most of the beautification works on the course to be completed by the end of September, just in time for the grass to flourish in the summer season. Members and the community can already see the transformation, and we're confident the revamped Maamba Golf Club will soon match international standards," Brighton said.

The ongoing rehabilitation is part of a broader vision to make Maamba Golf Club not just a sporting facility, but a vibrant social hub for the community.



MAAMBA PRIVATE SCHOOL EXPANSION SET TO DELIVER INTERNATIONAL-STANDARD EDUCATION



Maamba Private School is undergoing an expansion aimed at delivering international-standard education and positioning itself among the top institutions in Zambia's Southern Province.

The project, spearheaded by Maamba Energy under its Corporate Social Responsibility (CSR) programme, includes the construction of 14 classrooms, four laboratories, a computer lab, library, auditorium, and administrative block. The school will transition from double to single sessions, allowing for a full day of academic and co-curricular activities.

The proposed expansion and upgrade represent a pivotal moment for the institution, enhancing its educational





The school's ambition to attain international status is supported by its curriculum, infrastructure, and commitment to excellence. The new facilities will enable students to sit for Ordinary and Advanced Level examinations, preparing them for tertiary education and global opportunities.

infrastructure and uplifting standards within the Maamba community. The initiative is designed to meet contemporary needs, addressing both functional and social demands while adhering to modern environmental standards. Its architecture emphasises sustainability, incorporating energy-efficient solutions and reducing the carbon footprint to create a self-sustaining, environmentally conscious learning environment.

"Education is the cornerstone of community development," said Christopher Mukala, Head of CSR at Maamba Energy. "We're investing in quality infrastructure and teaching

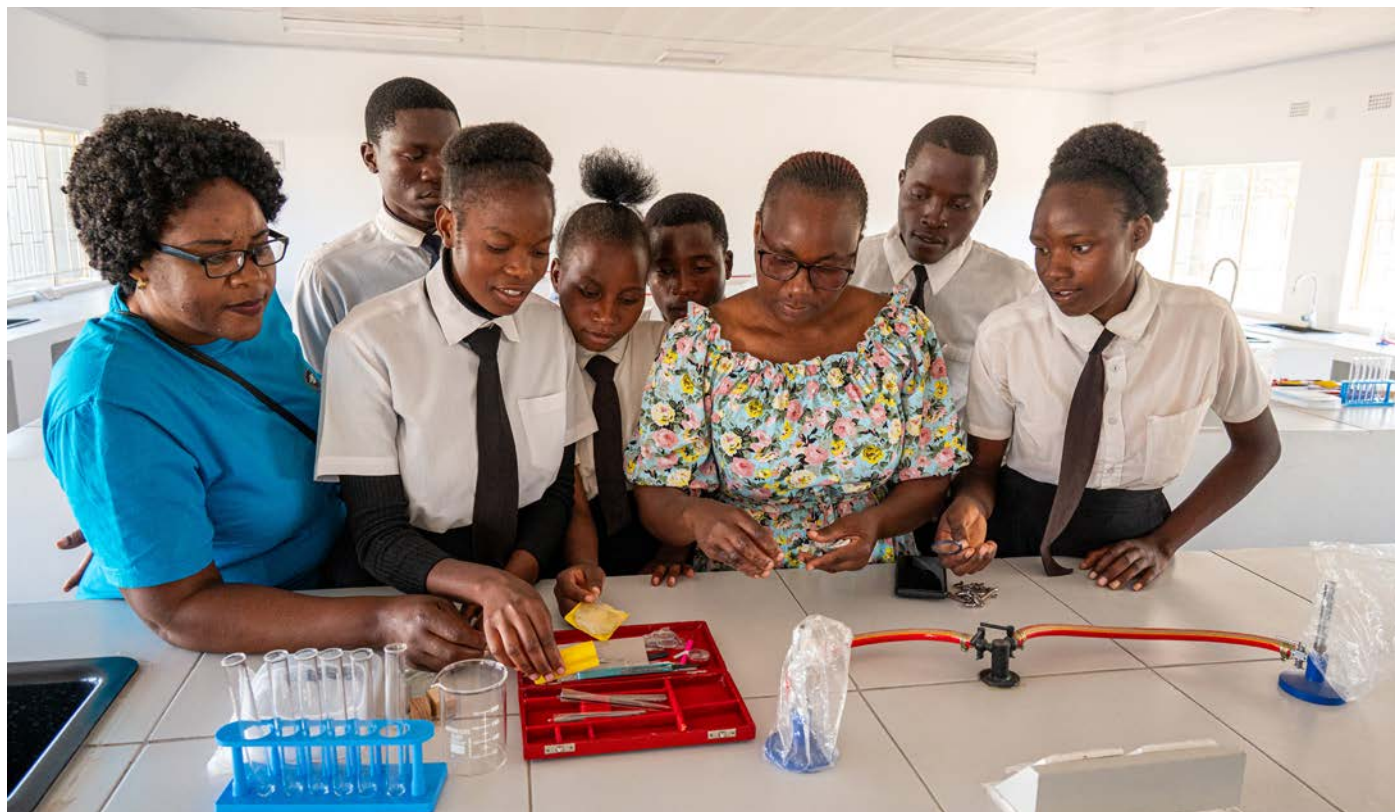
to ensure Maamba Private School becomes a centre of excellence and international education standards accessible to employees, contractors, and the wider Maamba community."

School Principal Justina Kaonga expressed enthusiasm about the expansion's alignment with the school's strategic vision. "This project allows us to implement the full Competency-Based Curriculum up to Form 6, preparing learners for tertiary education without leaving Maamba," she said. "It's a game-changer for families who previously had to send children away for quality schooling."

The expansion also brings tangible economic benefits. General Foreman Elvis Mwansa confirmed that the construction, which began in July, has created jobs for many local residents. "We're building 12 classrooms, four labs, a library, and a canteen. The community is actively involved, and we aim to complete key structures by December 2025," he said.

With its modern facilities and commitment to skill-based learning, Maamba Private School is poised to become a beacon of educational progress that empowers students and uplifts the community.





NEW SCIENCE LAB AND CLASSROOMS TRANSFORM LEARNING IN SOUTHERN PROVINCE

Modern education facilities and infrastructure upgrades boost education and local development in Sinazongwe and Zimba Districts

Communities in Sinazongwe and Zimba Districts have received a major boost to education and local development through a series of initiatives, including the handover of a fully equipped science laboratory at Mweela Secondary School and classroom upgrades, refurbished facilities, and road improvements in Zimba District.

The new science laboratory at Mweela Secondary School, constructed at a cost of K663,987 with an additional K115,000 on apparatus, is fitted with modern equipment for natural, life, and physical sciences. It serves pupils from Form 1 to Form 5, enabling hands-on practical learning in line with the national curriculum. Essential instruments such as burettes, pipettes, test tubes, and chemicals were also provided.

Speaking on behalf of the Sinazongwe District Commissioner, District Education Board Secretary Henry Hanfwiti said:





“This science laboratory is a turning point for the community of Mweela and their educational achievements. Government recognises science, technology and innovation as pillars of economic growth. With support from partners like Maamba Energy, we can transform commitments into action.”

MEL’s Head of CSR, Christopher Mukala, highlighted the company’s broader commitment: “We see ourselves as partners in progress. These investments reflect our dedication to uplifting lives and supporting sustainable development.”

With these interventions, rural education and local infrastructure in southern Zambia have been strengthened, providing pupils with practical learning opportunities while supporting jobs and community growth.

MEL’s Head of Mining Operations, Scott Phiri, added: “This gift is more than just a building; it’s a milestone for both the school and the community. We’ve provided the infrastructure, the apparatus and the chemicals to get laboratory learning started immediately.”

In Zimba District, Chalimongela, Siankope, Kabanga, and Pukuma communities benefited from new classrooms, refurbished facilities, 80 double-seater desks, road upgrades, and the creation of 108 local jobs. Chalimongela School received a completed 1x3 classroom block, while Siankope School was refurbished and shared desks with Mulamfu Secondary School.

District Commissioner Robson Mulamfu praised the projects, saying: “These developments will greatly benefit learners and stimulate further growth in our communities.”





MAAMBA ENERGY POWERS ZAMBIA WITH WORLD-CLASS EFFICIENCY AS PLANNED MAINTENANCE KEEPS THE LIGHTS ON

Maamba Energy Ltd. one of the world's most efficient thermal power plants undertook a critical maintenance shutdown this August and September to sustain its exceptional performance and safeguard the country's baseload electricity supply.

The 300-megawatt coal-fired plant currently supplies 18% of Zambia's electricity, despite representing only 8% of the nation's estimated 3,800 MW installed generation capacity. This feat has been crucial amid reduced hydroelectric output caused by low water levels at Kariba and Kafue.

"Our plant runs at over 90% plant load factor, a global benchmark in thermal power generation where the average is between 55% and 65%," said Maamba Energy CEO Lt. Col Cyrus Minwalla (Retd). "Technically, it is impossible to go beyond 90%, so we are operating at the peak of global efficiency. That is only possible because of our robust maintenance and operational practices." Thermal generation from Maamba has become Zambia's true baseload supply, unaffected by rainfall or sunlight. Minwalla explained: "Hydropower used to be the country's baseload, but

weather vagaries have changed that. Our coal supply is constant and secure, so we can provide uninterrupted generation."

The plant took one unit offline at a time for mandatory servicing Unit 1 from 17 to 31 August and Unit 2 from 7 to 21 September.

"Every 4,000 operating hours, we must shut down for about 15 days as prescribed by our equipment manufacturers," Minwalla said. "It's a non-negotiable process that extends the life of the plant and keeps efficiency at its peak. We aim to finish faster so every saved hour means more power back into the grid."

Despite being coal-fired, Maamba Energy maintains exceptional environmental controls. Its electrostatic precipitator captures 99.9% of ash, preventing harmful emissions. Rehabilitation of old mine voids and tree-planting 55,000 trees in four years have turned ash dumps into green landscapes and the Fly Ash is being further utilised at a Fly Ash Brick Plant for the manufacturing of bricks that are empowering the community in Maamba.

"The air in Maamba Energy is actually cleaner than the air in Lusaka," Minwalla noted. "This is because of our advanced technology, continuous monitoring, and environmental rehabilitation."

The company's maintenance schedules are set in close consultation with ZESCO. "When President Hakainde Hichilema visited in January 2023, he emphasised that asset integrity is paramount," Minwalla recalled. "He told us to coordinate with ZESCO, so maintenance does not coincide with the lowest water levels in our hydropower reservoirs and that's exactly what we are doing."

Maamba Energy is on track to add another 300 MW through Phase II expansion and add another 100 MW solar plant through Maamba Solar Energy Limited by mid-2026, raising its total contribution to 700 MW.

"We are totally committed to the people of Zambia," Minwalla said. "Our goal is to keep the lights on and the economy running."

GREEN LIGHT FOR SUSTAINABILITY AT ZAMBIA'S LARGEST POWER PLANT

Solar lighting initiative boosts energy efficiency and safety at Maamba Energy

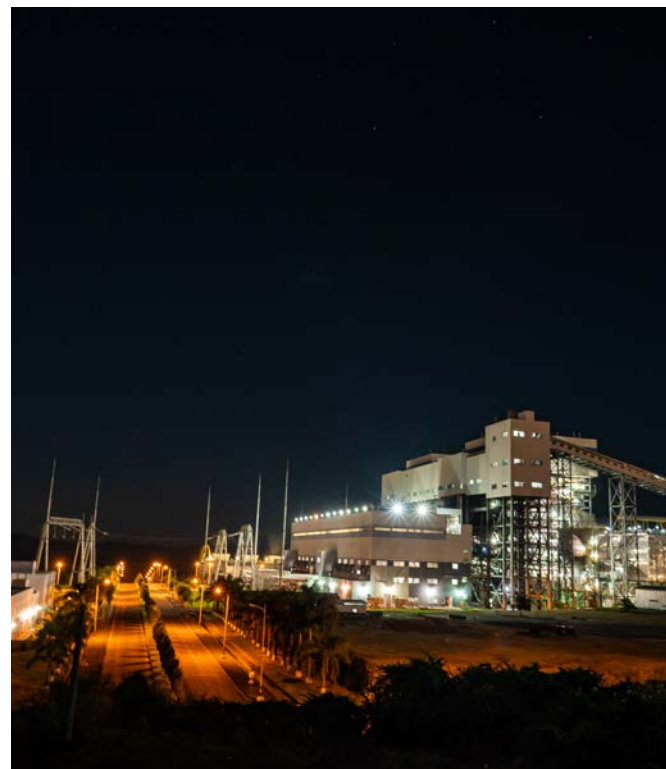


In a bold step towards cleaner energy, Zambia's largest coal-fired thermal power plant is installing solar lights across its operational areas. Launched in the second quarter of 2025, the initiative marks a significant shift towards sustainable practices and improved energy efficiency at Maamba Energy's facilities.

"Maamba Energy is installing solar lights around its thermal power plant as a means to enhance energy efficiency, diversify power sources, conserve electricity, and improve operational safety," said MEL Plant Head, Mr Ambarish Srivastava Kumar.

The solar lighting system has proven both cost-effective and practical, particularly in remote zones. With minimal maintenance and long lifespans, the LED-based lights enhance safety, reduce energy costs, and reinforce the company's commitment to environmental responsibility.

This initiative reflects Maamba Energy's broader goals of clean energy adoption and sustainable business practices.



MAAMBA ENERGY MARKS WORLD ENVIRONMENT DAY WITH CALL TO END PLASTIC POLLUTION

Maamba Energy joined the global community in commemorating World Environment Day 2025 under the theme “Ending Plastic Pollution: A Call to Action.” The company highlighted that sustainable development and industrial growth must go hand in hand, and that tackling plastic pollution requires bold, united efforts.

As part of its internal reforms, Maamba Energy is phasing out single-use plastic water bottles across its thermal power plant and mining operations, replacing them with reusable alternatives. This step forms part of the long running “Keeping Maamba Green” campaign, which promotes waste reduction and encourages environmental stewardship, particularly among young people in surrounding communities.

The company’s commitment extends beyond plastic use. Through recycling projects, land restoration, sustainable resource management, and community outreach, Maamba Energy has embedded environmental responsibility



into its operations. By engaging local communities and empowering the youth, it aims to cultivate a generation that views environmental care as a duty rather than a choice.

On this World Environment Day, Maamba Energy reaffirmed its belief that industry and environment are not opposing forces, but partners in building a sustainable future.



BRAKE TEST RAMPS INTRODUCED TO STRENGTHEN MINE SAFETY PROTOCOLS

New infrastructure aims to prevent accidents and ensure compliance at Kanzinze and Izuma pits



New brake test ramps have been installed at Kanzinze and Izuma pits as part of a broader safety initiative to reduce vehicle-related risks in mining operations. The ramps, designed for both heavy and light vehicles, will serve as mandatory checkpoints for brake efficiency before entering pit zones, ensuring that only roadworthy equipment operates in high-risk areas.

The move reflects a proactive approach to mine safety, with early defect detection and improved equipment reliability at its core. By reducing the risk of uncontrolled vehicle movement in steep and uneven terrain, the ramps are expected to significantly enhance protection for personnel and assets.

“This is about preventing accidents before they happen,” said SHEQ Superintendent Charles Lumba. “By subjecting vehicles to brake tests, we’re able to detect and correct defects early, improve reliability, and align with best practices in mining safety. It’s a small step with a big impact.”

The initiative supports Maamba Energy’s ‘Zero Harm’ objective, reinforcing its commitment to a safe, compliant, and productive workplace.



MAAMBA ENERGY CHAMPIONS

WELLNESS AND UNITY THROUGH SPORTS

Maamba Energy has taken significant strides in promoting employee wellness and community engagement through sports, hosting a range of tournaments in the second quarter of the year. The initiatives aimed to support a healthy workforce while also meeting extracurricular interests for employees and other stakeholders within Maamba.

The sporting calendar featured football, chess, pickleball, and cricket, among other activities, culminating in the company's second annual social football tournament held in July.

Speaking at the opening of the football tournament, Human Resource Manager Bwali Ndaou emphasised the value of sports in fostering health, teamwork, and family engagement.



"It's very important for our own well-being. We have to keep physically fit, and we should also carry this message back home to encourage our children to participate in the various sports that we have here in Maamba," Mr Ndaou said.

Beyond the tournaments, employees enjoy a variety of sports facilities on site.

"Besides football, we have squash in the next building, pickleball, volleyball, basketball, and a new playground. These activities are part of our annual programme that encourages teamwork, fitness, and social interaction," he added.

The events also saw participation from partner organisations under Maamba Energy's umbrella, including subcontractors.

Through these initiatives, Maamba Energy continues to strengthen a culture of wellness, collaboration, and community spirit, ensuring that both employees and their families benefit from an active and healthy lifestyle.

TEAM SPIRIT AND SPEED ON SHOW AT INTER-COMPANY RELAY



The Inter-Company Relay held on 12 July at Showgrounds Polo B in Lusaka brought together more than 70 companies for a lively day of running, teamwork and corporate pride.

Maamba Energy Limited (MEL) joined the fun with a strong team and plenty of enthusiasm. In the CEO 100m Sprint, MEL took third place in a thrilling race that included the Honourable Minister of Sports, Mr Elvis Nkandu, who came first.



Ten MEL runners, two women and eight men tackled the 10km Individual Run. The company's top finishers came in 5th and 6th, just missing the podium but showing great effort and determination. Every MEL participant received a medal, a proud reminder of their commitment to health and team spirit. "Well done to Team MEL for representing with energy and pride—great going!"



BICYCLE RACKS BOOST SAFETY AND SUSTAINABILITY AT MINE AND PLANT SITES



Alongside vehicle safety, attention is being given to the safe movement of workers and visitors who cycle to site. “By introducing bicycle racks, we are not only improving safety but also reinforcing our commitment to sustainable transport solutions for the wider workforce community,” said SHEQ Superintendent Charles Lumba.

Mr Lumba added, “Bicycles are a sustainable and healthy mode of transport, but they must be managed responsibly. By ensuring bicycles are parked before entering the mine and plant areas, we significantly reduce the risk of accidents and maintain a safer working environment for everyone.”

The racks prevent unsafe entry into operational zones and promote sustainability by supporting those who choose cycling as an eco-friendly commuting option. They also improve site orderliness by reducing clutter and trip hazards caused by improperly parked bicycles.

By separating cycling from operational areas, the site ensures that mobility, sustainability, and safety work in harmony, protecting people while supporting greener transport choices.

Site safety and mobility have advanced with the installation of dedicated bicycle racks at mine and plant access points. These racks form part of a broader safety protocol that prohibits bicycle riding beyond designated control areas, helping to prevent accidents in high-risk operational zones.

The mine and plant are now officially classified as no-riding zones due to the risks bicycles pose in environments with heavy machinery, uneven terrain, and limited visibility. To support this directive, the Safety, Health, Environment and Quality (SHEQ) team has introduced secure bicycle parking facilities to manage the estimated 200-plus bicycles on site.



MINE SAFETY DEPARTMENT DELIVERS LEGAL APPOINTMENT TRAINING

In a decisive move to strengthen safety and regulatory compliance within its operations, Maamba Energy Limited recently hosted a specialised Legal Appointment Training session led by inspectors from the Mine Safety Department (MSD). The initiative targeted both senior management and frontline supervisory staff, underscoring the company's commitment to cultivating a culture of competence and accountability across all levels of its mining workforce.

The training, tailored for roles including Mine Manager, Project Managers, Superintendents, Engineers, Mine Captains, Shift Bosses, Persons in

Charge, and Foremen, focused on the legal responsibilities and compliance standards mandated by Zambia's mine safety legislation. Delivered by MSD officials, the programme provided direct regulatory insight, ensuring participants gained a robust understanding of the legal frameworks that govern the mining sector.

Given the high-risk nature of mining operations, the session was deemed essential. It reinforced the importance of legal knowledge as a foundation for operational safety, environmental stewardship, and equipment integrity. Participants emerged with a clearer grasp of their statutory obligations, a

renewed sense of accountability, and enhanced leadership capacity in safety-critical environments.

The Legal Appointment Training forms part of a broader strategy by Maamba Energy to align its practices with national safety standards while fostering proactive engagement with regulatory bodies. By facilitating direct knowledge transfer from MSD inspectors, the company aims to embed legal literacy into its operational ethos, ensuring that safety is not merely a procedural requirement but a shared organisational value.



PICTURE STORIES

NAPSA BOARD MEMBERS VISIT



LABOUR DAY CELEBRATIONS



VISIT BY ZAF COMMANDER







maamba

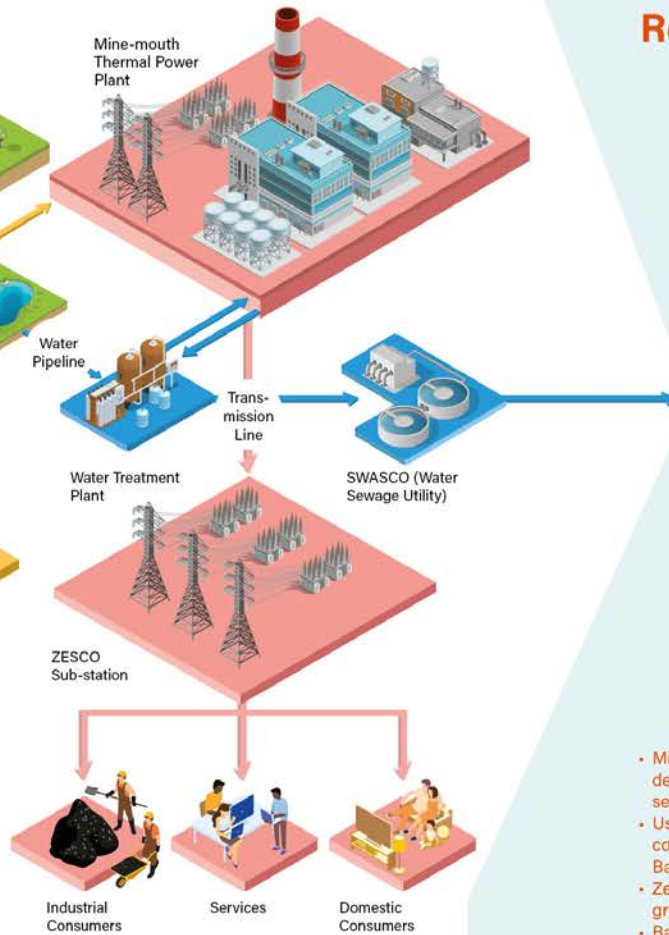


MAKING A DIFFERENCE...

Coal Mining



Thermal Power Installed Capacity 300 MW



Corporate Social Responsibility



- Mitigate environmental degradation by use of polluting self-combusting coal in TPP
- Use of SOX/NOX/PM emission control technology *in* World Bank norms
- Zero-effluent discharge protecting ground water
- Back filling mine voids
- Dedicated arboriculture programme using re-cycled water
- 'Green Maamba' campaign – planting indigenous trees with community involvement

Outcomes...

...making a difference

- Conversion of polluting thermal-grade coal to high-value base-load energy
- Contributes 10% of Zambia's installed power generation
- Provides energy security and diversity in energy mix
- Sale of high-grade coal to domestic customers for construction industry and SMEs
- 100% by-product utilization
 - Unsellable coal as input for power plant
 - Fly ash for construction sector
 - Waste water for arboriculture
- Community Development

ABOUT MAAMBA ENERGY LTD

Maamba Energy Limited (MEL), in Sinazongwe District in Southern Province, is Zambia's largest coal mine and the nation's biggest Independent Power Producer (IPP) with Zambia's only coal-fired Thermal Power Plant (TPP). The company operates a 300 MW (2x 150 MW units) modern, eco-friendly coal-fired power plant—the only one of its kind in Zambia—with the capacity to supply 10 percent of the country's currently installed electricity generation capacity. MEL is owned 65 percent by Nava Bharat Singapore Pte and 35 percent by ZCCM-IH, with some US\$919 million invested since 2010. The plant provides diversity in the nation's energy mix and contributes to the nation's base load electricity demand with high-availability power that is independent of climate change, thereby augmenting energy security of Zambia.



CONTACT US

- Corporate Park
Alick Nkata Road
Lusaka
- www.maambaenergy.com
LinkedIn: maamba energy-ltd
- +260 962608976