



## MCL CHAIRMAN MEETS H.E. PRESIDENT EDGAR CHAGWA LUNGU

# CONTENTS



4

MCL Chairman meets H.E. President Edgar Chagwa Lungu at State House



6

MCL Joins ZACCI



10

MCL Focus - Safety & Training



8

MCL celebrates International Women's Day

### Other Features

- New employees join MCL
- MCL / NEZL Families empower Community Women

### Editorial team

Commodore PJ Sudhir (Retd), Jethro Sikalunda, Chiwoyu Sinyangwe

# EXECUTIVE MESSAGES

## Foreword by the Resident Director



**Mr. Ashwin Devineni - Resident Director**

I am happy to note that MCL as well as the O&M Team continue to put in their best, ensuring we continue to optimize our output. Sustained generation and supply of power is critical in the coming months, especially considering reduced water levels in key reservoirs and the possibility of an energy deficit in the country.

Here, I would like to reiterate MCL's commitment to ensuring optimal availability in coal mining and Power Plant operations – helping energy security for Zambia.

As we celebrate the International Women's Day on 8<sup>th</sup> May, I am pleased to note that the current batch of Zambian trainee engineers for the Power Plant includes four women. This is in keeping with MCL ethos of ensuring women remain an integral part of our operations.

In the same vein, I also congratulate all the youth in our workforce at MCL, as we commemorate 'Youth Day,' observed on 12<sup>th</sup> March every year, to celebrate the contribution of youth to our society.

On a sad note, I would like to express my condolences to the families of two of our former employees who served MCL with distinction – Mr. Coin Siakachoma, former Senior Manager, Technical Services and Mr. Krishna Mohan, former Materials Manager who passed on 31<sup>st</sup> March and 29<sup>th</sup> March, 2019 respectively. My thoughts are with their families in their hour of grief.

*Ndalumba kapati, Natotela saana, Dzikomo kwambiri!*

## Message by the Chief Executive Officer



**Rear Admiral Venkat Shankar (Retd) - CEO**

I welcome readers to this edition of the Maamba Collieries Ltd Newsletter.

The period under review witnessed smooth operations, both at the Thermal Power Plant and the Mine. I also take this opportunity to commend MCL's Operations & Maintenance (O&M) Team Nava Energy for their diligence in maintenance, repairs and operations of the Plant.

The oncoming months promises to be difficult with impending power cuts looming largely due to poor rainfall. This would mean that we, at Maamba, could be looked up to bridge the power deficit caused by low production from the Hydro Plants.

We should not fall short of this challenge and I am confident that my team at the TPP and the Mine would shoulder this responsibility with characteristic aplomb which is the hallmark of Maamba Collieries.

On a sad note, we lost two of our longstanding employees to natural causes. Mr. Coin Siakachoma and Mr. Krishna Mohan served MCL with distinction since privatization, the former having served the old MCL too. May their Souls rest in Peace.

# MCL Chairman meets His Excellency Mr. Edgar Chagwa Lungu at State House



H.E. Mr. Edgar Chagwa Lungu (right), President of the Republic of Zambia, with MCL Chairman, Mr. D. Ashok & MCL Resident Director, Mr. Ashwin Devineni, at State House in February, 2019

The Chairman of Maamba Collieries Ltd, Mr. D Ashok and the Resident Director, Mr. Ashwin Devineni, called on His Excellency Mr. Edgar Chagwa Lungu, the Republican President of Zambia at State House on 26<sup>th</sup> February, 2019.

During the call, the Chairman of MCL updated His Excellency on the progress of MCL since commissioning of the 300-MW mine-mouth coal-fired Thermal Power Plant in August 2016 and briefed him on the challenges being faced.

The President was also briefed by MCL sponsors on their other investments in Zambia, notably in Kawambwa Sugar in Luapula.

President Lungu evinced keen interest in both the projects and sought several clarifications. He also intimated his interest in visiting MCL at the earliest.

The President also assured the Chairman of his Government's support for MCL which His Excellency termed as a "strategic project."



H.E. Mr. Edgar Chagwa Lungu, President of the Republic of Zambia, Hon'ble Ministers of Finance, Energy, Mines and Senior Government Officials with MCL Sponsors and Management

## MCL's CSR initiatives in Maamba

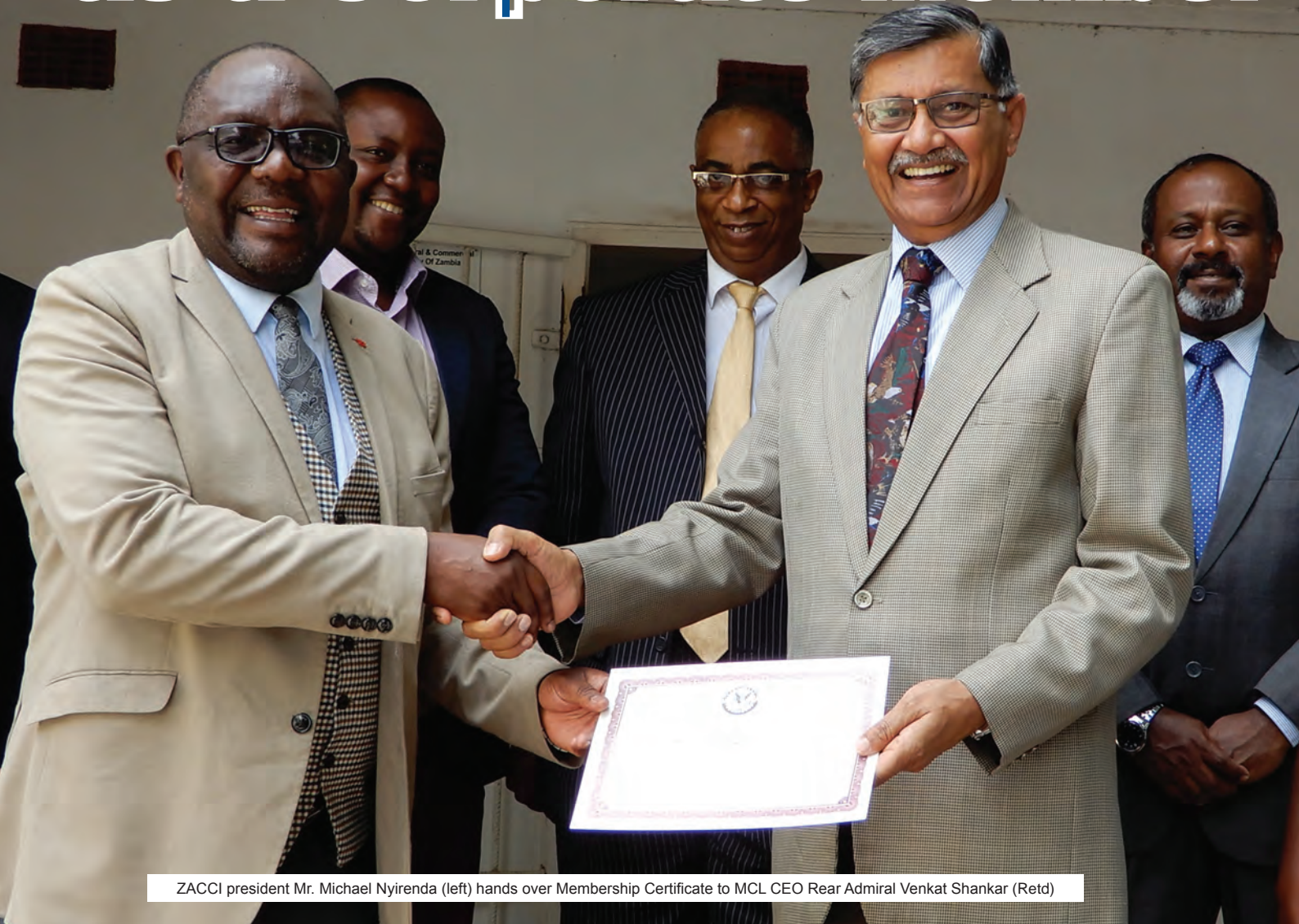


MCL Doctor attending to patients at Maamba Hospital



Maamba residents enjoying the safety and comfort of newly-constructed roads by MCL

# ZACCI welcomes MCL as a Corporate Member



ZACCI president Mr. Michael Nyirenda (left) hands over Membership Certificate to MCL CEO Rear Admiral Venkat Shankar (Retd)

*“We are pleased to become a corporate member of ZACCI today and look forward to interacting under the aegis of ZACCI to promote growth and development in the country,” says MCL CEO Rear Admiral Shankar (Retd)*

**M**aamba Collieries Limited has become a corporate member of ZACCI and as the largest coal mine and Independent Power Producer in Zambia looks forward to participating with the Chamber in future.

ZACCI officials led by the president, Mr. Michael Nyirenda, welcomed MCL as a corporate member and handed over the membership certificate in a simple ceremony at the ZACCI head office in Lusaka.

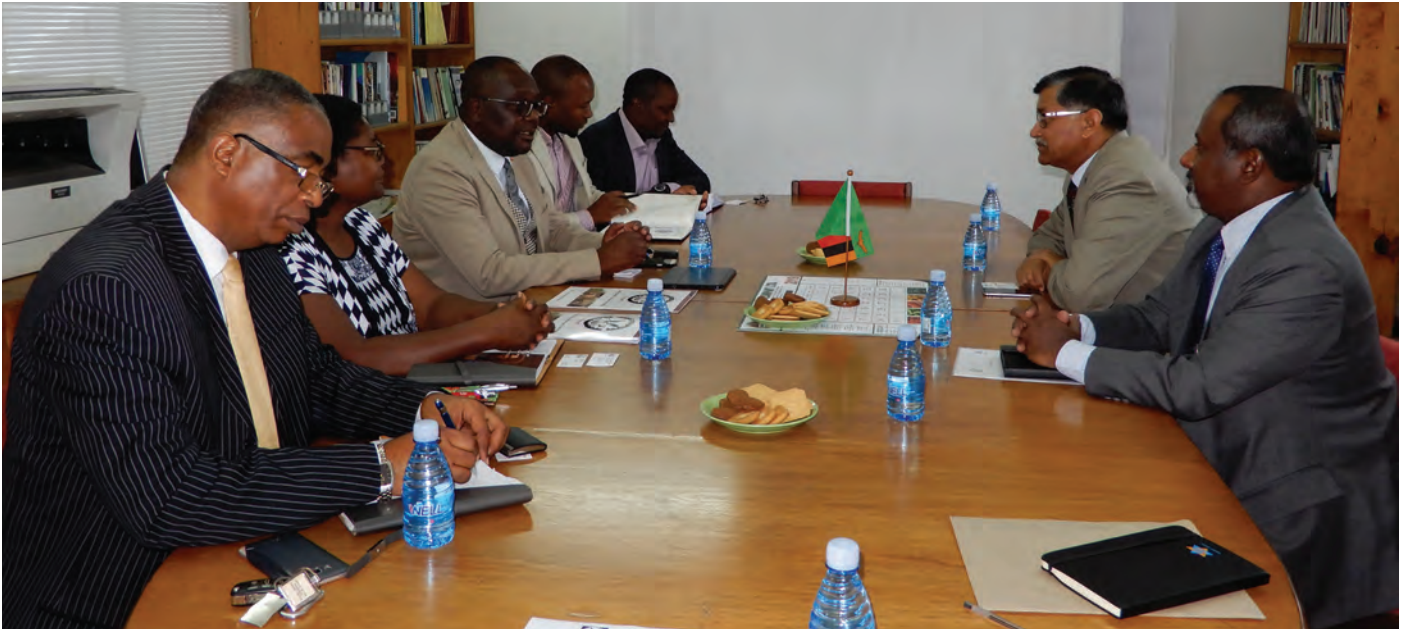
Speaking at the ceremony, MCL’s Chief Executive Officer, Rear Admiral Venkat Shankar (Retd), said the Company is pleased to join ZACCI – ‘the Voice

of Business’ in Zambia.

He added; “We are pleased to become a corporate member of ZACCI today and look forward to interacting under the aegis of ZACCI to promote growth and development in the country.”

The CEO said although MCL has formally joined ZACCI only this year, the two organizations have been interacting in the past, with MCL actively participating in periodic activities organized by ZACCI.

Rear Admiral Shankar (Retd) highlighted that since privatization in 2010, MCL has successfully



revamped mining operations and reopened the mine in July 2011.

Thereafter, MCL achieved a major milestone in August 2016 with the successful commissioning of the 300-Megawatts integrated mine-mouth coal-fired Thermal Power Plant, the only one of its kind in Zambia.

He explained that the Company's operations adopt modern, eco-friendly mining and power generation technologies, and focus on value addition for the nation as well as community development.

The CEO said that MCL remains committed to ensuring energy security and providing the much desired energy mix to meet the growing energy demand of Zambia, as envisaged in the 7th National Development Plan.

Meanwhile, Mr. Nyirenda expressed confidence that the two organizations will work together for the betterment of the country's energy sector and also the economy.

Mr. Nyirenda also called on the government to encourage private investment in the electricity sector by putting in place sound policies as well as ensuring cost-reflective tariffs.

He highlighted that Zambia's dependence on hydropower which accounts for over 80% of all electricity generated in the country, poses a threat to the availability of power especially in times of droughts, as experienced during the power deficit crisis in 2015 - 16.

Mr. Nyirenda said that MCL accounts for over 10 % of the nation's installed power generation capacity.

# MCL JOINS IN CELEBRATING INTERNATIONAL WOMEN'S DAY



MCL Female employees at the TTP

As our readers would know, 8<sup>th</sup> March is celebrated worldwide as International Women's Day. MCL, as a responsible corporate entity, has been consciously working to promote women in positions which hitherto were mostly the preserve of men.

In this issue, as a way of acknowledging the role women in MCL, we bring you short excerpts of our reporter's interview with two ladies – both engineers, employed in MCL's TPP and the Mine.

We wish all ladies in MCL the very

best in their endeavors. Read on...

## SELINA KAMBI

Miss Kambi works as Mechanical Maintenance Technologist and is closely associated with the maintenance of the 300-MW coal-fired Thermal Power Plant at MCL, the first of its kind in Zambia.

A graduate from the Northern Technical College in Ndola, Miss Kambi said the fight for women recognition in science and technological fields needs the support of men.

"We have seen a lot of women taking up careers previously thought to be for men and these women are doing extremely well," Miss Kambi said.

"Women are making it and we need the support of the men because







Selina - Keeping things running

we make the world complete,” she added.

Miss Kambi draws inspiration from her Dad who is an Electrical Engineer.

**JACYNTHA SHELENI**

A Bachelor in Mineral Sciences

graduate from the University of Zambia with a major in Mining engineering, Miss Sheleni joined MCL in September 2018 as a Shift Boss under the Technical Services Department.

She works closely with the Mine Manager to ensure smooth operations at the Pit and that

data collection related to mining operations is properly recorded and managed.

Miss Sheleni says although it is important to celebrate International Women’s Day, it is vital that focus shifts towards ensuring that women are given equal opportunities to pursue their passions.

“I love engineering and that’s why I am an engineer. I shouldn’t be looked at as a lady but as someone who worked for what I am today, and I want to achieve even higher than where I am today,” says Miss Sheleni whose inspiration into engineering draws from her father, an Electrical Engineer.

“I am also glad that I joined MCL as my first job because here we are given all the opportunity to succeed in your job and I am enjoying that support,” she added.

Miss Sheleni said she also draws a lot of inspiration from other women succeeding in fields previously thought to be the preserve of men.



Jacyntha - Showing the way



## MCL Focus - Safety & Training

**M**aamba Collieries Ltd and Nava Energy Zambia Ltd (NEZL), the Operations & Maintenance (O&M) Contractor for MCL's 300-MW coal-fired Thermal Power Plant (TPP) continue to focus on prevention of accidents and occupational diseases, thereby improving safety standards.

To ensure and promote best safety standards amongst O&M Team members, MCL and NEZL conducted a 'Safety Awareness Drive' last March which included an Essay Competition and award of certificates for the best entries.

The event was conducted in close coordination with the Safety, Health, Environment and Quality (SHEQ) Department of MCL.

Three topics – 'Importance of PPE & Utilization,' 'Avoiding negligence in complying with Safety Procedures,' and 'Safety Culture,' formed the

subjects of focus in the essay competition.

The competition attracted 78 entries, of which 14 were selected for various awards.

According to global industrial investigations and behavioural patterns, the main causes of most preventable incidents are negligence of safety procedures and non-usage of Personal Protective Equipment (PPE).

Accordingly, MCL pro-actively encourages all employees in the use of PPE at workplace and to comply with safety procedures to achieve MCL's goal of Zero Harm.

Towards this, during the safety awareness drive, all participants pledged unwavering commitment to always uphold best safety practices to achieve the ultimate goal of Zero Harm in day-to-day operations.



### SAFETY PLEDGE

*\* On this Day, I totally affirm that I will rededicate myself to the cause of safety, health and protection of environment. I will do my best to observe all rules, regulations and procedures. I will develop attitudes and habits which are helpful for achieving the safety objectives.*

*\* I fully realise that accidents and diseases are a drain to me, to the Company and the nation. Accidents and diseases lead to harm to health, disabilities, deaths, damage to property, social suffering and general destruction of the environment.*

*\* I will do everything possible for the prevention of accidents, occupational diseases, protection of environment to the best of my ability for the benefit of the family, community and the nation at large.*

Maamba Collieries Ltd always prioritizes training and development as a key enabler in enhancing productivity among the workforce.

Towards this, MCL invests resources in organizing proper training and development

sessions for the new hires.

Importantly, MCL also ensures that even experienced employees are retrained on a regular basis – a process called continuation training.

This training modules serve as the medium in identifying skill or knowledge gaps and bringing employees up to speed on all counts.

For new hires, such training also helps familiarize with the company procedures and processes and helps faster integration into the team.

While all departments are encouraged to conduct training which cater for their specific requirements, the Safety, Health, Environment and Quality (SHEQ) training is for all departments.

The SHEQ training covers both practical and theoretical aspects to include subjects such as firefighting drills, first aid training, driver's training among others.

MCL even takes some aspects of this training to its wholly-owned Maamba Private School to inculcate good civic sense into the children.

# MCL mourns former employees



The Board of Directors, Management and all Staff of Maamba Collieries Ltd regret the passing on of former Senior Technical Services Manager - the Late Mr. Coin Siakachoma.

A veteran mining engineer, the Late Mr. Siakachoma held various positions in MCL and was instrumental in the transition of MCL from a rundown asset before privatization to current recapitalized and vibrant Company before his retirement in December 2018.

MCL wishes the bereaved family comfort and God's guidance as they deal with the loss of Mr. Siakachoma who was not just a household name at MCL but also within the Maamba Community.



The Board of Directors, Management and all staff of Maamba Collieries Limited regret the passing on of former Materials Manager, the Late Mr. Krishna Mohan Bellam.

Krishna Mohan was part of Nava Bharat family for 22 long years and was amongst the first batch of expatriates to come to MCL Zambia from India. He played a key role in establishing the Materials' department at MCL and the initial systems and processes. A very pleasant mannered personality, he was always willing to help his colleagues, both professionally and personally. His sudden demise, due to cancer, took away a valuable colleague from us.

MCL expresses its condolences and may his soul rest in peace and God give courage and strength to his bereaved family to face this huge loss. MCL will cherish its memories of Krishna Mohan.

## MCL / NEZL FAMILIES EMPOWER COMMUNITY WOMEN



As a way of commemorating International Women's Day which falls on 8th March of each year, some MCL/NEZL families donated a sewing machine and related accessories to a group of five women in Mayanda Community of Maamba Township. Mrs. Chigonke, one of the beneficiaries, thanked the expatriates' families for the timely donation. She said that the donation will go a long way in empowering women in the community. Mayanda compound is one of the unplanned settlements on the outskirts of the Maamba Township.

# MCL Welcomes New Employees



**Monica Katutula Ngoma**

In October 2018, Monica joined MCL as a Human Resource Officer. A graduate in Human Resource Management from Mulungushi University, Monica is determined to bolster the MCL HR Department by learning and working with her colleagues to realize all HR needs of MCL.



**Jacyntha Sheleni**

Jacyntha, with a passion for engineering and women empowerment joined MCL as Shift Boss under Technical Services Department in October 2018. A graduate of the University of Zambia with a Bachelor in Mineral Sciences - majoring in Mining Engineering, Jacyntha says she is a go-getter and oriented to achieving the very best always.

**Kebby Nyambe**

An Electrical Engineer, who graduated from the University of Zambia in 2017 with a major in Electrical Power and Machines, Kebby has joined MCL as Protection Systems Engineer early this year.



Kebby says his strength is to show courtesy to all and to uphold values of honesty and integrity, while paying attention to employer's guidelines and regulations.

**Swern M'hango**

Swern joined MCL as Shift Boss in 2018. He had a brief stint earlier with MCL while undergoing industrial attachment experience in 2016. A graduate with a Bachelor's Degree in Mining Engineering from the Copperbelt University,



Swern's responsibilities include hands-on pit operations and also ensuring safety of the operations.



**Hamaimbo Amos**

Joining MCL in December 2018, for Amos it is 'coming back home' as he was born and raised in Maamba. Amos holds a Diploma in Clinical Medicine General from Kafue Institute of Health Sciences and joins MCL as a Clinical Officer. Amos says he is a strong believer in the power of team work, interdependence and motivation as the means of achieving the highest goals.



**Masiliso Mulumemui**

A graduate with a Bachelor's Degree in Mining Engineering from the Copperbelt University in 2016, Masiliso has joined MCL as Shift Boss in the Mining Department. A passionate miner, Masiliso says joining the company is a "big thing for him", as MCL is his first employer after graduating.

**David Sichone**

David joins MCL as Senior Accountant, with 16 years of experience in Accounting, having worked as Finance Manager/Financial Controller in several reputable organizations and a history of proven performance.



David says he is determined to ensure that he will be able to help improve the business processes and contribute to the growth of MCL.

**Dalitso Luke Lungu**

Dalitso joined MCL in January 2019 as a Safety Officer. He holds a Diploma in Managing Health and Safety from the Institute of Commercial Management.



He also holds a Certificate in Computer Hardware Maintenance and Repair from Northern Technical College (NORTEC). He says working for MCL is an honour and a great career move, as it provides an excellent environment for his career because of the size of the company.

# MCL in Pictures

## January - March 2019



MCL Team marching forward

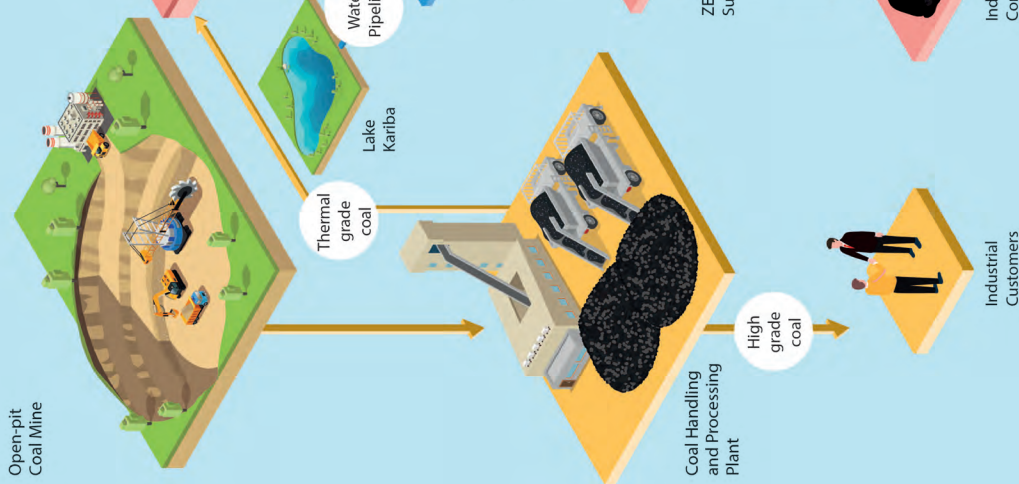


Sinazongwe D.C, Mr. Protacial Mulenga (left), at the MCL Stand during this year's International Women's Day Celebrations

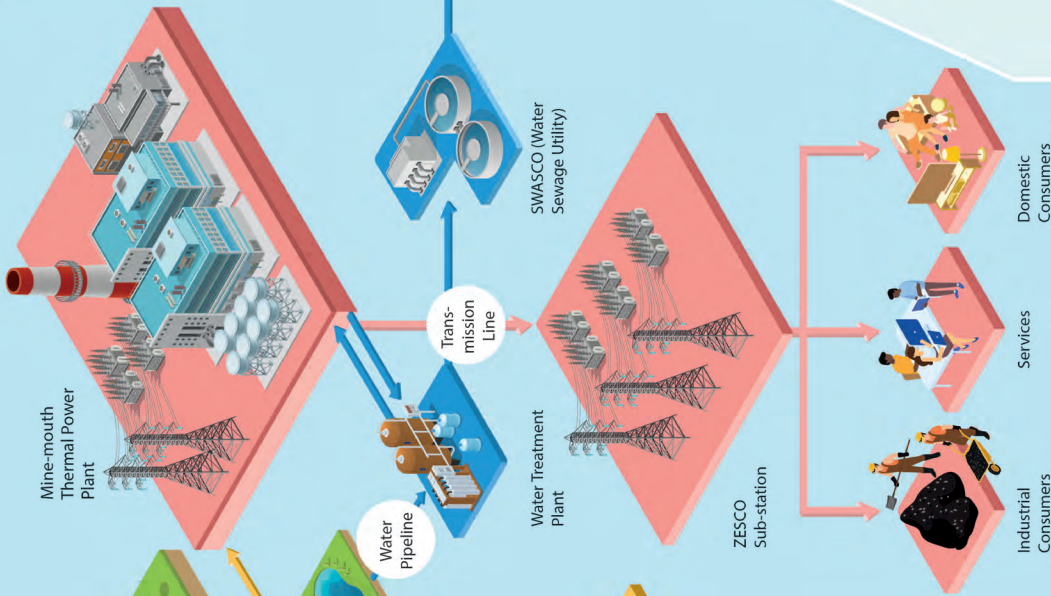


MCL Women at International Women's Day Cake cutting Celebrations

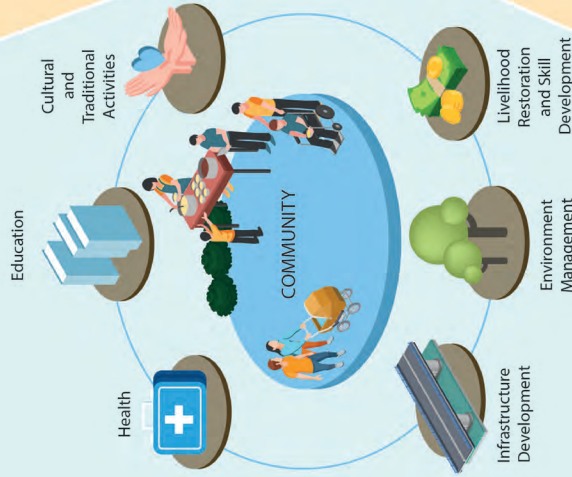
## Coal Mining



## Thermal Power Installed Capacity 300 MW



## Corporate Social Responsibility



## Outcomes... ...making a difference


- Conversion of polluting thermal-grade coal to high-value base-load energy
- Contributes 10% of Zambia's installed power generation
- Provides energy security and diversity in energy mix
- Sale of high-grade coal to domestic customers for construction industry and SMEs
- 100% by-product utilization
- Unsellable coal as input for power plant
- Fly ash for construction sector
- Waste water for arboriculture
- Community Development


- Mitigate environmental degradation by use of polluting self-combusting coal in TPP
- Use of SOX/NOX/PM emission control technology iaw World Bank norms
- Zero-effluent discharge protecting ground water
- Back filling mine voids
- Dedicated arboriculture programme using re-cycled water
- 'Green Maamba' campaign – planting indigenous trees with community involvement

# Coal Product Specifications

MCL established a modern, Coal Handling and Processing Plant (CHPP) which has facilitated production of washed coal of different specifications with consistent quality and eliminated pollution of nearby streams.

## Product Specifications

Washed Coal Nuts	Parameter	Min & max
	Size	+20 - 50 mm
	Inherent moisture %	1.5 - 1.9
	Total moisture %	3.0 - 9.0
	Ash %	18 - 20
	Volatile Matter %	18 - 21
	Fixed Carbon %	59.1 - 60.5
	Phosphorous % (Average)	0.0025
	Total Sulphur %	0.7 - 1.5
Gross Calorific Value (kcal/kg)	6294 - 6482	

Washed Coal Peas	Parameter	Min & max
	Size	+10 - 20 mm
	Inherent moisture %	1.5 - 1.9
	Total moisture %	3.0 - 9.0
	Ash %	18 - 20
	Volatile Matter %	18 - 20
	Fixed Carbon %	60.1 - 60.5
	Phosphorous % (Average)	0.0025
	Total Sulphur %	0.7 - 1.5
Gross Calorific Value (kcal/kg)	6294 - 6482	

Washed Coal Fines	Parameter	Min & max
	Size	+0.5 - 10 mm
	Inherent moisture %	1.5 - 1.9
	Total moisture %	5.0 - 12
	Ash %	18 - 20
	Volatile Matter %	18 - 20
	Fixed Carbon %	60.1 - 60.5
	Phosphorous % (Average)	0.0025
	Total Sulphur %	0.7 - 1.5
Gross Calorific Value (kcal/kg)	6294 - 6482	

Unwashed Coal Fines	Parameter	Min & max
	Size	+0.5 - 10 mm

**Maamba Collieries Limited**  
Head Office

P.O Box No.99, Maamba, Zambia  
For product inquiries please  
contact: roopesh@maambacoal.com  
Business Development Manager

Lusaka Office  
Corporate Park  
Plot No. 20849, Alick Nkata Road  
Mass Media Area  
PO Box 31197 Lusaka Zambia